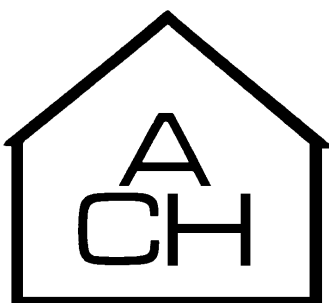




Alicia Care Home Statement of Purpose



Atwell House
Easy To Read



Contents Page

LIVING AT ATWELL HOUSE:	3
ADDRESS AND TELEPHONE NUMBER OF ALICIA CARE HOME	3
MANAGER OF ALICIA CARE HOME	4
WHO OWNS ATWELL HOUSE?	4
STAFF	5
WHO CAN LIVE AT ATWELL HOUSE?	5
HOW WE WILL SUPPORT YOU?	7
COMING TO LIVE AT ATWELL HOUSE	8
THINGS FOR YOU TO DO	9
MAKING ATWELL HOUSE YOUR HOME	9
FIRE AND EMERGERNCY	10
RELIGION	11
FAMILY AND FRIENDS	11
IF YOU ARE NOT HAPPY	12
YOUR BEDROOM	13

ATWELL HOUSE

STATEMENT OF PURPOSE

LIVING AT ATWELL HOUSE:

ALICIA CARE HOME CARES FOR 68 SERVICE USERS WITHIN 3 UNITS. ATWELL HOUSE IS ONE OF THOSE UNITS WHICH CARE FOR 7 SERVICE USERS WITH LEARNING DISABILITY, PHYSICAL DISABILITY AND LEARNING DISABILITY AND DEMENTIA. THERE WILL BE A NURSE AND CARER TO CARE FOR YOU DAY AND NIGHT.



DAY

AND



NIGHT



NURSE

ADDRESS AND TELEPHONE NUMBER OF ALICIA CARE HOME

**ALICIA CARE HOME
105 – 115 MARSH ROAD
LUTON
LU3 2QG**

**(ALICIA) TELEPHONE:
01582 560500**

**(WINGFIELD) TELEPHONE:
01582 507400**

**ATWELL HOUSE
33 – 35 MARSH ROAD
LUTON
LU3 2QF**

**(ATWELL HOUSE) TELEPHONE:
01582 584500**



MANAGER OF ALICIA CARE HOME

THE MANAGER OF ALICIA CARE HOME IS CALLED SARAH SOLMAN

OUR LEARNING DISABILITY LEAD IS CALLED SARAH SOLMAN.

WHO OWNS ATWELL HOUSE?

MRS SAROJA THASAN, MS INDRANEE THASAN AND MS ANDREA THASAN ARE THE OWNERS OF ALICIA CARE HOME AND HAVE MANY QUALIFICATIONS AND OVER 25 YEARS EXPERIENCE PROVIDING CARE FOR PEOPLE WITH DIFFERENT NEEDS.

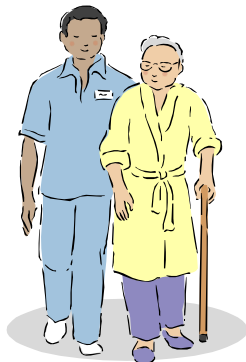


**ALICIA NURSING HOME WAS NAMED AFTER THE THASAN'S MOTHER,
ALICIA ELEANOR THASAN**



STAFF

THERE ARE MANY MEMBERS OF STAFF WHO ARE HERE TO HELP YOU WITH ALL OF YOUR NEEDS. THEY KNOW HOW TO CARE FOR YOU AND PROTECT YOU.



THEY RECEIVE LOTS OF TRAINING TO ENSURE THEY MEET YOUR NEEDS.

WHO CAN LIVE AT ATWELL HOUSE?

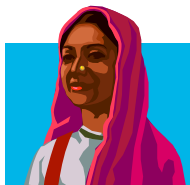
MEN AND WOMEN OVER THE AGE OF 30 YEARS WHO HAVE A LEARNING DISABILITY WITH OR WITHOUT A PHYSICAL DISABILITY OR A LEARNING DISABILITY WITH DEMENTIA.

THERE MAY BE TIMES WHEN SERVICE USERS COME TO STAY FOR A SHORT TIME DUE TO PROBLEMS AT HOME LIKE A FAMILY MEMBER BEING ILL OR WANTING TO GO ON HOLIDAY.



WHO CAN LIVE AT ATWELL HOUSE?

ALL SERVICE USERS ARE WELCOME TO LIVE AT ATWELL HOUSE NO MATTER WHERE THEY COME FROM OR WHO THEY ARE.



HOW WE WILL SUPPORT YOU?

WHILST LIVING AT ATWELL HOUSE WE WILL MAKE SURE THAT EVERYTHING THAT YOU NEED AND WOULD LIKE YOU WILL GET. STAFF ARE HERE TO HELP YOU AND MAKE YOU AS HAPPY AS YOU CAN BE.

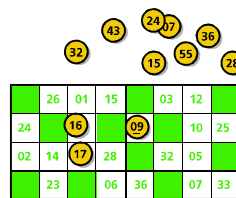
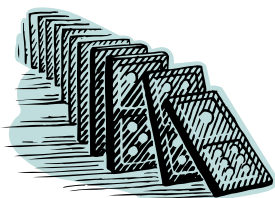
THERE WILL BE OTHER PEOPLE INVOLVED TO MAKE SURE YOU ARE HAPPY AND CARED FOR AND THEY ARE CALLED THE “MULTI-DISCIPLINARY TEAM”. THE MULTIDISCIPLINARY TEAM CAN INCLUDE PEOPLE FROM THE FOLLOWING PROFESSIONS OR AGENCIES:

ARTS PSYCHO THERAPISTS	DIETICIAN	SENSORY IMPAIRMENT TEAM
OCCUPATIONAL THERAPISTS	PSYCHOLOGISTS	SPEECH AND LANGUAGE THERAPISTS
PHYSIOTHERAPISTS	TRAMO STAFF	SPECIALIST INTERVENTION SERVICE
MEDICAL PRACTITIONERS	CARE MANAGER	INTENSIVE SUPPORT TEAM
SOCIAL WORKERS	PRACTICE NURSE	GENERAL PRACTITIONERS



WHEN LIVING AT ATWELL HOUSE WE WANT TO MAKE SURE YOU FEEL LIKE IT IS YOUR HOME AND THAT YOU ARE COMFORTABLE AND HAPPY. WE WILL RESPECT YOUR DIGNITY, PRIVACY, INDEPENDENCE AND INDIVIDUAL PREFERENCES AND SEEK TO CARE FOR YOU IN LINE WITH THE PRINCIPLES OF ‘VALUING PEOPLE’ WHICH WILL ENSURE YOU REMAIN SOCIALLY INCLUSIVE, HAVE CHOICE AND CONTROL OVER YOUR LIFE AND CARE, AND ARE EMPOWERED TO MAKE DECISIONS. WE WILL DO THIS BY MAKING SURE WE LISTEN TO AND CONSULT WITH YOU IN RELATION TO ALL MATTERS CONCERNING YOUR LIFE, HEALTH AND CARE.

WE WOULD LIKE YOU TO JOIN IN AND TELL US HOW YOU ARE FEELING AND WHAT YOU WANT TO DO BOTH INSIDE AND OUTSIDE OF THE HOME.



STAFF CAN CREATE TOGETHER WITH YOU AND YOUR FAMILY, IF YOU WISH, A “CARE PLAN” JUST FOR YOU. WHERE POSSIBLE WE WOULD LIKE YOU TO CHAIR YOUR PERSON CENTRED REVIEWS.

WE WOULD LIKE YOU TO TELL US WHAT YOU DO LIKE AND DON'T LIKE THIS COULD BE THE FOOD, ACTIVITIES, HOW YOUR ROOM LOOKS, - ANYTHING!



LIKE



DON'T LIKE



VEGETABLES



FRUIT



SALAD



MEAT



FISH

COMING TO LIVE AT ATWELL HOUSE

BEFORE COMING TO LIVE AT ATWELL HOUSE YOU WILL BE ASKED IF YOU WOULD LIKE TO COME AND VISIT FIRST, YOU WILL BE ABLE TO SEE AROUND THE HOME AND YOUR BEDROOM, MEET OTHER SERVICE USERS AND STAFF. YOU CAN BRING ANYONE WITH YOU LIKE A FRIEND OR A FAMILY MEMBER.

YOU DON'T HAVE TO MAKE UP YOUR MIND STRAIGHT AWAY AS TO IF YOU WANT TO LIVE HERE OR NOT, YOU HAVE 3 MONTHS TO SEE IF YOU ARE HAPPY THEN A DECISION CAN BE MADE AS TO WHETHER YOU PREFER TO STAY AT ATWELL HOUSE ALL THE TIME.

THERE IS A WEEKLY FEE FOR LIVING AT ATWELL HOUSE DETAILS OF WHICH CAN BE FOUND IN THE CONTRACT WHICH WE PROVIDE YOU AND YOUR REPRESENTATIVE/FAMILY/SOCIAL WORKER WITH. THIS FEE ALLOWS US TO MEET YOUR DAY TO DAY NEEDS INCLUDING ACCOMMODATION AND CARE AND ANY COSTS NOT INCLUDED IN THE WEEKLY FEE ARE SET OUT IN THE CONTRACT.

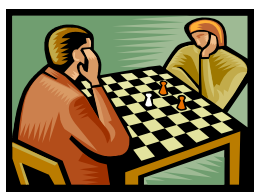


THINGS FOR YOU TO DO

WHAT DO YOU LIKE TO DO? DO YOU HAVE A HOBBY? DO YOU LIKE PLAYING CARDS, PAINTING, READING OR LISTENING TO MUSIC. WE WILL SPEND TIME FINDING OUT WHAT YOU LIKE TO DO AND WHERE YOU LIKE TO GO.

WE HAVE A VEHICLE SO YOU CAN GO OUT WITH STAFF WHENEVER YOU WANT TO GO TO THE PUB, SHOPPING, SWIMMING, SEASIDE; IT'S UP TO YOU!!!

IF YOU WISH YOU CAN PLAY BOARD GAMES, BINGO, WATCH FILMS, MAKE ARTS & CRAFTS, DRAW AND PAINT, SING-A-LONG, DANCE AND HAVE PARTIES.



MAKING ATWELL HOUSE YOUR HOME

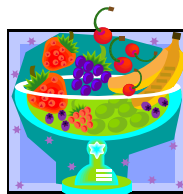
WE WANT YOU TO BE HAPPY, COMFORTABLE AND SAFE WHEN LIVING AT ATWELL HOUSE.

THERE ARE MEETINGS FOR YOU TO TELL US HOW YOU ARE FEELING. YOU CAN TELL US IF YOU ARE HAPPY OR NOT HAPPY WITH THE WAY YOU ARE TREATED, IF YOU LIKE OR DON'T LIKE THE FOOD, IF YOU ARE HAPPY WITH THE WAY YOUR BEDROOM LOOKS OR ANYTHING YOU WOULD LIKE TO TELL US ABOUT THE HOME.

WE HAVE SATISFACTION QUESTIONNAIRES FOR YOU AND YOUR FAMILY TO COMPLETE SO WE CAN KNOW WHAT YOU WANT TO BE CHANGED OR HOW WE CAN IMPROVE.



LIKE



DON'T LIKE



**WE WANT YOU TO INFLUENCE HOW ATWELL IS RUN AND HAVE
“YOUR SAY”.**



THERE ARE MANY OTHER PEOPLE WHO LIKE TO MAKE SURE YOU ARE HAPPY AND THEY ARE CALLED “FRIENDS OF ALICIA” AND THEY WILL TELL US ANY IDEAS YOU MIGHT HAVE AND HELP US ARRANGE ACTIVITIES FOR YOU AS WELL.



FIRE AND EMERGENCY

ALL STAFF KNOW WHAT TO DO IF THERE IS A FIRE OR EMERGENCY. STAFF WILL HELP YOU GET TO SAFETY.

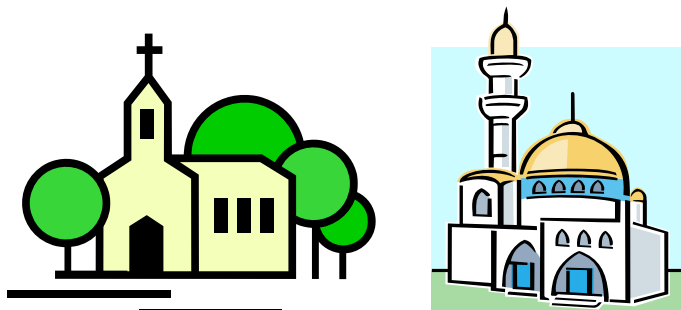


ONCE A WEEK YOU WILL HEAR FIRE ALARMS THIS IS TO CHECK THEY ARE WORKING. YOU WILL ALSO HAVE PRACTICE FIRE DRILLS WHICH MEAN STAFF WILL SHOW YOU WHAT TO DO.



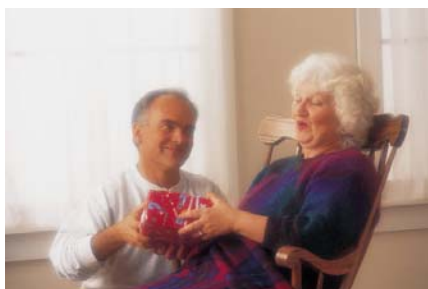
RELIGION

YOUR RELIGION WILL BE RESPECTED AND IF YOU WANT TO VISIT A PLACE OF WORSHIP SUCH AS A CHURCH OR A MOSQUE THEN STAFF WILL TAKE YOU.

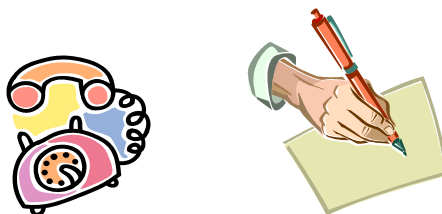


FAMILY AND FRIENDS

ALL OF YOUR FAMILY AND FRIENDS ARE WELCOME TO VISIT YOU WHENEVER YOU WANT THEM TOO.



YOU CAN TELEPHONE OR WRITE TO THEM WITH THE HELP OF A MEMBER OF STAFF IF NEEDED.



YOU CAN MAKE AND RECEIVE PHONE CALLS AT ANYTIME AND ANY POST THAT YOU RECEIVE WILL BE GIVEN TO YOU.



YOU CAN INVITE FRIENDS TO ANY SOCIAL EVENTS SUCH AS THE CHRISTMAS AND EASTER PARTIES, SUMMER FETE AND BBQS, TRIPS OUT OR JUST FOR LUNCH!



THEY CAN ALSO COME TO ANY OF YOUR MEETINGS IF YOU WANT THEM TO BE THERE.



IF YOU ARE NOT HAPPY

IF YOU ARE NOT HAPPY ABOUT SOMETHING PLEASE TELL SOMEONE. YOU CAN TELL A MEMBER OF STAFF OR THE MANAGER AND THEY WILL DO THEIR BEST TO MAKE THINGS RIGHT AND WILL DISCUSS WITH YOU HOW THINGS CAN BE PUT RIGHT AND WHETHER YOU WISH THE MATTER TO BE DISCUSSED INFORMALLY OR YOU WISH US TO FOLLOW OUR HOME COMPLAINTS POLICY AN EASY READ VERSION OF WHICH CAN BE MADE AVAILABLE TO YOU.



HAPPY



NOT HAPPY

TELL US PLEASE!

YOUR BEDROOM

YOUR BEDROOM WILL HAVE A BED, TELEVISION, CHAIR, WARDROBE AND DRAWERS AND EN-SUITE TOILET OR SHOWER ROOM.



YOU CAN BRING YOUR OWN THINGS LIKE PICTURES, CUDDLY TOYS, PHOTOS OR ANYTHING THAT MAKES YOU FEEL HAPPY.

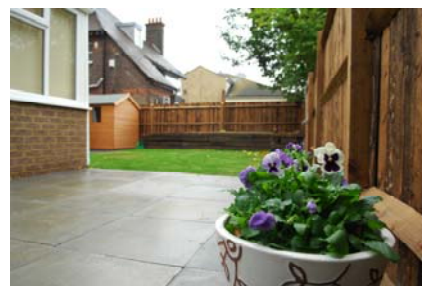


THERE ARE OTHER ROOMS IN ATWELL HOUSE WHERE YOU WILL BE ABLE TO ENJOY SPENDING YOUR TIME.

THERE IS A LOUNGE WHERE YOU CAN WATCH TV OR READ A BOOK, A DINING ROOM WHERE YOU CAN EAT WITH OTHER SERVICE USERS,



AND A CONSERVATORY AND A GARDEN, WHERE YOU CAN HELP WITH PLANTING AND HAVE BBQS.



YOU WILL BE GIVEN PRIVACY, DIGNITY AND RESPECT BY EVERYONE AND YOU MUST ALSO RESPECT THE PRIVACY AND DIGNITY OF OTHER SERVICE USERS.

YOU HAVE THE RIGHT TO LIVE FREE FROM ABUSE.

WE ENSURE WE COMPLY WITH ALL THE LOCAL SAFEGUARDING OF VULNERABLE ADULTS POLICIES, PROVIDE REGULAR TRAINING TO STAFF AND WANT YOU TO TELL US IF YOU HAVE ANY CONCERNS OR ARE UNHAPPY IN ANYWAY.

YOU CAN PHONE THE LOCAL SAFEGUARDING OF VULNERABLE ADULTS TEAM YOURSELF IF YOU WANT TO ON 01582 547659

OR, YOU CAN CONTACT THE REGULATORY BODY FOR CARE HOMES AT:

**CARE QUALITY COMMISSION
CITYGATE
GALLOWGATE
NEWCASTLE UPON TYNE
NE1 4PA**

☎ 03000 616161

